

  
**PARADISE**  
OUTDOOR DESIGNS

OUTDOOR POLY FURNITURE  
**2025 CATALOG**





## *Spend More Time Outdoors*

Paradise Outdoor's pieces are all finely crafted from Tangent sustainable lumber, a superior wood alternative that we love for its supreme strength and longevity. Beauty, too. Our new designs and favorite classics make up a thoughtful collection that looks great, feels wonderful, and goes the distance.

Because UV protection is built into all of our premium poly lumber furniture, you'll never need to re-finish or re-paint it. Our furniture is resistant to pests, moisture, mold and mildew – and stays fresh and beautiful, even in extreme heat or cold climates. No fading, rusting, cracking or splintering. Simply clean with soap and water. It's low maintenance. Which means you'll do less working – and more living. Preferably outdoors!

And because Paradise Outdoor Designs cares about the future, we believe in Tangent's "green building" - a holistic concept that promotes positive effects on the environment throughout the entire building life cycle, from building design to construction and even the manufacturing process of the building materials. The aim of green building is to make efficient uses of land, materials, energy, and water, generate minimal waste, and provide healthy environments by restoring, improving, or enhancing the natural environment. Tangent's green construction materials are designed with these principles in mind.

We love that each year, Tangent diverts millions of pounds of post-consumer and post-industrial plastic from the waste stream. Tangent recovers millions of pounds of plastic and transforms it into their recycled plastic lumber. They demonstrate accountability to customers by contracting with GreenCircle Certified, LLC, a third-party firm to audit and provide annual certification of their environmental claims.

On July 1, 2015 Tangent achieved Recycled Content Certification by GreenCircle. This certification qualifies and substantiates their compliance with all Federal Trade Commission (FTC) 2012 Green Guidelines, so that Tangent and its customers move forward with confidence.

Tangent is also first in the industry to receive a Closed-Loop Product Certification. Key customers and Tangent established a collaborative system whereby plastic scrap generated at shops like Paradise Outdoor Designs is returned to Tangent for reuse and recycling back into the same or similar products within their manufacturing operation. GreenCircle has audited and certified this take-back program and awarded Tangent a Closed-Loop Product Certification.

## Contents

Product Care & Warranty . . . . .	3
Fireside Collection . . . . .	4
Josey Deep Seating Collection. . . . .	6
Jayden Seating & Fenwick Tables . . . . .	8
All-Weather Gliders. . . . .	10
Classic & Contemporary Rockers. . . . .	11
Jayden Chairs with Fire Table . . . . .	12
Outdoor Poly Fire Tables . . . . .	13
Fenwick Adirondacks & Turtle Tables. . . . .	14
Instant Settee . . . . .	15
Surf Adirondack Conversation Set . . . . .	16
Surf Settee Balcony . . . . .	17
Surf Dining Sets. . . . .	18
Classic Lounger Set . . . . .	20
Boat Table . . . . .	21
44 x 96 Table & Bethany Chairs . . . . .	22
Dining Farm Table. . . . .	23
Paradise Pub Set . . . . .	24
44 x 72 Lancaster Dining Set . . . . .	25
Product Index. . . . .	26
Table Sizes. . . . .	37
Colors. . . . .	39

**TANGENT**  
SUSTAINABLE LUMBER



# Product Care & Warranty

## Product Care

**Paradise Outdoor Designs** furniture never needs to be painted or stained because it is built with recycled plastic that will not rot or splinter. The color will never wear off because it is embedded throughout the product. A UV protective agent keeps fading to a minimum. Poly furniture is not affected by most corrosive substances, and will not promote bacterial growth.

Cleaning is easy. Most dirt wipes away with nonabrasive soap and water using a soft sponge. Tight corners can be cleaned with a plastic bristled brush. Surface dust can simply be hosed off. Stubborn marks can be removed with a magic eraser. For rust spots, scrub the furniture with Iron Out. For a deep clean, use a pressure washer on the lightest setting and at no more than 1,500 psi. Do not place the tip of the pressure washer closer than 10"-12" from the furniture or it may damage the finish.

Surface protection - Flower pot residue should be removed regularly to prevent staining. Do not use sharp objects such as knives on your furniture. Avoid setting items with sharp edges on the furniture, including tools, metal, gravel, or dirty items. To avoid melting, do not place hot items directly onto the furniture.

All fasteners on **Paradise Outdoor Designs** furniture are 316 grade stainless steel. This high-grade stainless steel will not rust in a normal outdoor environment. If your furniture is heavily exposed to saltwater, occasionally rinse it with fresh water to maintain a rust-free surface.

All fasteners should be checked periodically for tightness.

Simple cleaning is all you need to do to enjoy beautiful **Paradise Outdoor Designs** furniture for many years!



## Limited Warranty

**Paradise Outdoor Designs** warrants to the original consumer purchaser that this polyethylene patio furniture product is free of defects in workmanship and materials. The warranty period is twenty (20) years of residential use and five (5) years of commercial use, with exceptions on certain parts as explained below, from the date of sale. This warranty does not cover damage caused by unauthorized service or repair; alteration or abuse, normal wear and tear on materials, or any attempt to use the product in a manner or for a purpose other than for which it is intended. **Paradise Outdoor Designs** will repair or, at its option, replace the defective product without charge. Should **Paradise Outdoor Designs** choose to replace the product, and the product is discontinued, a substitute product of similar function and equal or greater value will be made.

Polyethylene may scratch during normal use, fade slightly from exposure to sunlight, or stain after prolonged contact with other substances. These conditions are not defects and are not covered under this warranty.

Stainless steel fasteners are warranted to not fail structurally for the applicable warranty period if maintained according to the Care and Maintenance document. Swivels are warranted to not fail structurally for two (2) years of residential use. This warranty does not cover rusted fasteners and swivels, or structural failure due to rusted fasteners and swivels, resulting from improper maintenance. Black powder coated swivels are *not* covered by any warranty. Any swivels not manufactured by EB Swivels are NOT covered by any warranty. Cushions are warranted for a period of one (1) year of residential use. Compression of cushions is not considered a defect.

**Fire Tables** — The components used in **Paradise Outdoor Designs** fire pits and tables (including but not limited to: Crystal Fire burners, electronics, glass guards, and ignitors) are not covered under **Paradise Outdoor Designs** warranty.

**Paradise Outdoor Designs** makes no warranties other than those which are expressly described herein. **Paradise Outdoor Designs** extends no implied warranty of merchantability or of fitness for a particular purpose, and disclaims all liability for indirect or consequential damages, including, but not limited to, lost profits or other economic or commercial losses. Some states do not allow the exclusion or limitation of indirect or consequential damages; therefore, the above limitation may not apply to you. The sole remedy provided in this warranty is repair or replacement of this product. Any cost of shipping and handling will be paid by you.

To file a warranty claim, contact your local dealer. Your claim must explain the nature of the defect and include your name, address, and telephone number. This warranty gives you specific legal rights and you may have other rights which vary from state to state. As defined by federal law, this is a limited warranty.



# Fireside Collection

One of our most popular collections has been smartly updated with sleeker silhouettes and crisper color schemes. Re-vision your outdoor spaces with heavy duty pieces offering au courant charm and comfort while providing an everyday playground for you and your family to relax, play and entertain.

Now expanded with additional seating options, including a versatile sectional sofa and two new swivel chairs, this collection offers even more ways to create your perfect living space. The result is a freshly elegant look that suits an array of home styles—from Colonial to Cape Cod, and Mid-Century to Modern.

Each piece, from our signature chair to our new Fireside Swivel Rocker Chair, shares the same thoughtful design language that will look contemporary for years to come. This is perfect, since our signature durability means surfaces and colors will continue to stay fresh.



We use a **premier slat system** which provides **comfort** and **longevity**, along with **marine-grade** aluminum reinforcements.

*All of our tables have angle supports, made of aluminum, that provide extra stability and prevent sagging.*



*Pictured: Seashell with Canvas Navy Cushions*



*Pictured: The new Fireside Swivel Rocker Chair, the classic Fireside Chair and new Fireside Sectional Sofa.*



**430** Fireside Chair



**430-S** Fireside Swivel Chair  
**430-SR** Fireside Swivel Rocker Chair



**454** Fireside Ottoman



**431** Fireside Loveseat



**432** Fireside Sofa



**434** Fireside Coffee Table



**433** Fireside End Table

### *Seasonal Tip:*

Welcome new seasons by dressing up Fireside pieces with weather-friendly accessories. During cool months, keep a stack of colorful fleece or knit blankets nearby so guests stay cozy and comfortable. In spring, assemble a mix of brightly hued pillows on the sofa and loveseat to signal that warm weather fun is coming!



Cushions sold separately. See page 34.



*Pictured: Black & Seashell*

## Josey Deep Seating Collection with Josey Chat Fire 44" Round Table

Introducing a Paradise Outdoor Designs original for 2025: The Josey Deep Seating Collection brings minimalist elegance to outdoor living, pairing clean lines with exceptional comfort.

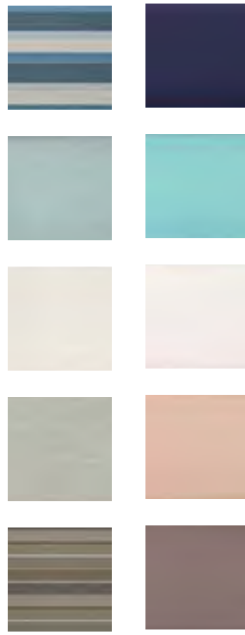
Each piece—from the relaxed sofa to the intimate loveseat and inviting chair—features plump, sink-in cushions that beckon you to unwind.

The collection's streamlined silhouette is built on marine-grade aluminum framework cleverly concealed within the design, delivering strength without compromising its airy aesthetic.

At the heart of the collection, the Josey Chat Fire 44" Round Table creates an instant gathering spot with its pale planked surface, offering generous space for drinks and small plates.

While decidedly contemporary, this collection's versatile design harmonizes beautifully with any outdoor style, from traditional to modern.

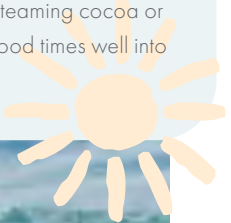
 **MADE IN USA**  
*Lancaster County, Pa*



Cushions sold separately.  
See page 34.

**Seasonal Tip:**  
Transform crisp evenings into cozy gatherings with the Josey Round Chat Fire Table's Crystal Fire Plus Burner, delivering a taller, brighter flame that creates instant warmth and ambiance.

Pair the fire's glow with the collection's plump, comfort-first cushions, a few soft throws and mugs of steaming cocoa or cider to extend the good times well into the cooler months.



**730** Josey Chair without cushion



**731** Josey Loveseat without cushion



**732** Josey Sofa without cushion



**812** 44" Round Chat Fire Table



*Pictured: Bright White & Patriot Blue*

## Jayden Seating with Fenwick Tables

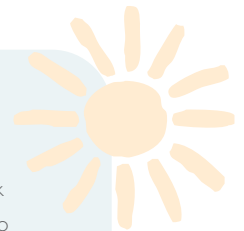


Our Jayden Collection combines comfort and vivid charm in a smart new silhouette. Vertical slats and square edges reference clean-cut, contemporary design, while thoughtful ergonomics allow for body ease whether entertaining friends for hours, or curled up on the patio with a good book. The collection consists of a club chair, a duo seat and an extended bench with seating for three.



### *Styling Tip:*

Add a Fenwick table to the mix – its complementary clean lines and plank design make it a perfect match. So do its dimensions, which are roomy enough to stow books and magazines, and hold drinks and small plates for guests.







**653** Jayden Chat Swivel Chair



The **smart**, two-tone design can be customized with an extensive selection of UV-resistant colors and natural-looking woodgrains.

**Marine-grade** steel fasteners bring added durability to the Jayden collection, yet stay neatly out of sight.

**You** can easily move and store your Jayden furniture, due to its slimmer design.



**652** Jayden Sofa



**651** Jayden Loveseat



**650** Jayden Chair



*Pictured: Black & Weathered Wood and Lancaster-style back*



### *Did you know?*

Our gliders feature fasteners made of SAE 316L grade stainless steel – also known as A4 or marine-grade stainless steel – which we've selected for its durability and corrosion resistance.

## All-Weather Gliders

Virtually maintenance-free, our stylish and supremely comfortable gliders have a pleasing wood-grain appearance, plus lots of longevity due to sturdy construction. Glide the day away on these hearty gliders! Our updated gliders feature a taller, broader Lancaster back that cradles you as you glide back and forth. Choose from our comfortable single glider – or spread out on a generous 4-foot double glider. Get even more expansive with our deluxe 5-foot double glider, equipped with a handy caddy that holds snacks and beverages and, when not in use, easily tucks out of sight for more sitting room.



**547** Lancaster Single Glider



**409** Gliding Ottoman



**548** Lancaster 4' Glider



**549** Lancaster 5' Glider w/cup holder



*Pictured: Black & Coastal Grey*

# Classic & Contemporary Porch Rockers

The timeless porch rocker now comes in two distinct high-backed styles: Classic, with traditional ventilated slats that sweep into a graceful curved top, or Contemporary, featuring thick vertical slats set closely together.

Both styles are available in your choice of wood-grain finishes and UV-resistant hues, from classically neutral to boldly modern.

These are all-year pieces, made from super-durable premium poly lumber that looks vivid season after season.

Both Classic and Contemporary versions share the same gently contoured seat for comfort, while each maintains an elegantly unadorned profile that suits any architectural style.

Tip: Position a favorite end table next to your rocker, and turn it into a favorite destination for morning coffee and afternoon naps.



**423** Modern Rocker



**417** 20" End Table



**422** Rocker



*Pictured: Patriot Blue with Frequency Ash cushions*



# Chat by the Fire in Jayden Style

Spend unforgettable evenings with friends and family around this cozy fire table, warmed by the flickering glow of orange flames. The set includes four cleancut yet comfortable Jayden chairs and one sturdy, square-top fire table. The set's silhouette is pleasingly low to the ground, so you can feel the lush grass or warm sand beneath your feet. There's plenty of table space for snacks and drinks, and the crisp, blue-on-white color scheme adds modern zip to any neutral home palette.

Or customize your look by choosing from our extensive selection of UV-resistant colors, from classic to vividly bold hues and natural-looking woodgrains.



*Versatile, elegant design. Suits big or small spaces - gather furniture closer for cozy scenes, or spread out on larger landscapes.*

*The flame fires up via a simple button ignition, and features an elegant, bowl-shaped flame guard so food and drink temperatures are not affected.*



**650** Jayden Chair



**800** Chat Fire Table



**800-L** 20" Round Poly Fire Table Lid  
*Fits both the 44" Round Fire Table and the 43 x 43 Fire Table*



*Pictured: Seashell & Patriot Blue*



*Pictured: Seashell & Sage*

*The Choice is Yours...*

Choose your configuration:

- Table Height
- Table Shape
- Poly Color
- Glass & Fire Media



# Outdoor Poly Fire Tables

Style Your Perfect Outdoor Warmth!

Our Poly Fire Tables invite you to create your perfect outdoor gathering space through thoughtful customization.

Choose from four distinct heights—from the intimate 25-inch Chat style that encourages cozy conversations, to the social 42-inch Pub height that’s perfect for standing gatherings and celebrations.

With multiple shapes, sizes and colors available, plus attractive protective covers for a polished look when not in use, these durable poly fire tables can be tailored to enhance any outdoor experience you envision.



**628** Kelsy Pub Swivel Arm Chair



**807** 72 x 44 Pub Fire Table



**804-L** Poly Fire Table Lid



## High Quality Burners

Our fire tables are fitted with burners that utilize cutting-edge technology to produce a taller, brighter, fuller flame. The burner is powered through a gas tank in the base of the fire table.



**Button Ignition** makes lighting a fire take only a moment.



**Flip-Down Tank Access** keeps your propane tank out of the weather, yet easily accessible.



**Durable Covers** protect your fire pit when not in use.



*Pictured: Bright White & Patriot Blue with Fenwick-style back*

# Fenwick Adirondack Conversation Set

The Fenwick set offers a contemporary take on the classic Adirondack chair – plus a scene-stealing table shaped in the form of a sea turtle. Relaxed and lounge-like, with ample armrests and a broad back, the Fenwick chair features vertical slats that slightly fan out as they near the top. Ideal for outdoor spaces where a more modern look is desired, the Fenwick set is nicely sturdy and substantial, constructed from rugged poly lumber and secured with marine-grade steel fasteners that are tucked neatly out of sight.



**530** Fenwick Folding Adirondack



**529** Turtle End Table



**528** Turtle Coffee Table

**TANGENT**  
SUSTAINABLE LUMBER

Exclusive lumber supplier for Paradise Outdoor Designs.





# Fenwick Folding Adirondack with Ottoman



**408** Ottoman



*Pictured: Bright White & Patriot Blue*

This Ottoman transforms any of our Adirondack-style chairs, like the Fenwick, into a instant lounger. Its perfect shape elevates the legs with ease, making it a nice place to rest after a walk, or when you feel like an afternoon siesta.

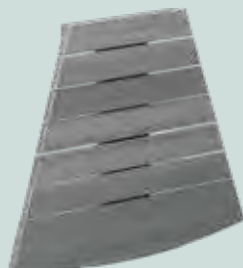
**Highly versatile**, the Fenwick chair coordinates with many of our other designs due to its clean-line simplicity. It's pictured here with the Sea Turtle table, but it also pairs perfectly with our Surf tables.

The **Fenwick** chair sits a little higher than a traditional Adirondack, providing just the right elevation for your legs.

The **seat** isn't as deep as other Adirondacks either, so no biting into the back of your knees.

**You** can customize the Fenwick's two-tone design, selecting from an array of UV-resistant colors and natural-looking wood grains.

**When** it's time to store this set, its slim folding design makes it easy to move and stow away.



**406** Settee Table



*Pictured: Driftwood Gray & Lancaster-style back*

## Instant Settee

**Another way** to customize your set of chairs is with a Settee. The attached table proves invaluable over time, a great place for a glass, and a way to keep the snacks and conversations close.

**Interchangeable** with all of our chairs.



*Pictured: Bright White & Patriot Blue with Fenwick-style back*



Our Adirondack chair **sits comfortably higher than most**, providing just the right elevation for your legs.

And... the seat isn't as deep as other Adirondack chairs, so **no more slats pressing into the back of your knees!**

Love the Fenwick or Paradise chair? Select from our other chair styles available with this set.

*Pictured: Bright White & Birchwood*

## Surf Adirondack Conversation Set

This surf-inspired set transitions smoothly from backyard to beach side. Our Adirondack chair is crafted for lounging, with a roomy armrest and a tall, broad back that's cleverly shaped in the silhouette of a surf board.

So too is the coordinating surf coffee table, where guests can help themselves to drinks and snacks, enjoy a round of cards, or gather for conversations that last long after the sun has set.

Get creative with color! Customize this two-toned design by selecting from our extensive palette of UV-resistant colors and wood-grain hues that look fresh and vivid, year after year.

More durability comes from marine-grade steel fasteners that resist corrosion, and are neatly hidden to give our chairs a look of clean, uninterrupted lines.



**523** Surf Folding Adirondack



**520** Surf End Table



**521** Surf Coffee Table

 **MADE IN USA**  
Lancaster County, Pa





**Easy Storage!**  
 When it's time to stow these chairs away, it's a simple and space-saving task due to their slim, fold-away design.

# Surf Settee Balcony



**526A** Surf Balcony Arm Chair



**406** Settee Table

Our chairs are available in 4 back styles



Surf



Fenwick



Lancaster



Paradise



*Pictured: Coastal Grey & Seashell*

# Surf Dining Sets

## Casual Cool Meets Peak Function

Our eye-catching Surf Set amplifies the fun, warm-weather feeling of any outdoor space. The high table is perfect for enjoying casual meals, presenting snacks and bottles of cold drinks— especially with its built-in bottle opener.

Select from a 4-foot or 6-foot table length, and pair with as many bar stools as you need. The Nesting Surf Stool was recently updated to have a more minimalist profile, and like the table, is completely water and UV resistant, so they'll keep looking bright and fresh each summer.



**637** Bethany Swivel Balcony Chair



**741** 8' Surf Board Table - Balcony Height  
**742** 8' Surf Board Table - Pub Height



**440** 6' Surf Board Table

**439** 4' Surf Board Table



*Pictured: Seashell & Weathered Wood*



*Pictured: Bright White & Aruba Blue*



*Choosing our Nesting Surf Stools makes a slender profile that's ideal for small or narrow spaces. Our design team translated the classic surfboard into a fun, functional and weather-resistant table, complete with fins. Surf's up!*



**442** 29" Saddle Seat Bar Stool



**380** 29" Nesting Surf Stool



**442-B** 29" Saddle Seat Bar Stool w/back



*Pictured: Bright White with Graphite Cushions*

### Did you know?



Spending just 15 minutes a day outdoors between 10 a.m. and 3 p.m. can significantly boost your body's levels of Vitamin D, which aids in boosting your immune system and maintaining healthy bones.

## Classic Lounger Set

This inviting twin lounge set will inspire you to spend more time outdoors—whether soaking up the sun or curling up with a good book. Set your phone and favorite drink on the sturdy Fenwick End Table and settle into the comfortable chaise.

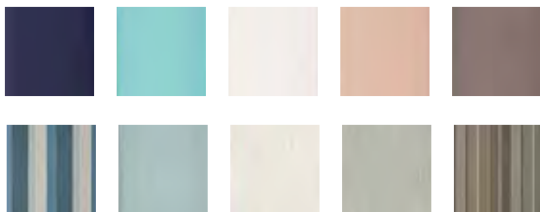
The lounge is the perfect height for getting up and sitting down, and the back is easy to adjust, from flat to fully raised. The lounge cushions are plush and comfy, with a durable cover that unzips for easy cleaning. Like the lounge, the fabric is resistant to UV rays, stains, water and the elements.



**564** Lounge with arms



**565** Lounge (no arms)



Cushions sold separately. See page 34.

# Boat Table

Inspired by classic nautical designs, our Boat Table is a versatile outdoor hosting hub that offers durability and lively style in equal measure. The table is topped with a dual layer of tough poly-lumber, and has a two-tier base for superior stability.

Use as a poolside buffet or food station, or a cheerful place to enjoy sun-splashed luncheons. Bon appétit!



**620** Kelsy Dining Side Chair



**623** Kelsy Dining Arm Chair



**600** 38x72 Dining Boat Table



*Pictured: Bright White & Powder Blue*



*Pictured: Coastal Gray*

## 44 x 96 Table & Bethany Chairs

Something magical happens when we gather with our favorite people around the table. Designed for memory-making meals and special times together, our new Oversized Table with Bethany Chairs boasts a roomy footprint (approximately 8-feet by 4-feet), super-sturdy construction, and a reinforced base that stands strong.

The table seats up to 10 people, with a generous width that accommodates full table settings, along with plenty of food and drink placed in the center. Bethany chairs are strong and comfortable, with high backs for extra stability and open sides for ease of movement.



**630** Bethany Dining Side Chair



**633** Bethany Dining Arm Chair



**475** 44 x 96 Dining Table

### *Important!*

Though perfectly suitable for use on lawns and other natural terrain, our tables should be stored long-term, on a hard and even surface



*Pictured: White & Patriot Blue*



**822** 46 x 72 Dining Farm Table



**655** Jayden Dining Side Chair



**658-S** Jayden Dining Swivel Arm Chair

## Dining Farm Table

The Dining Farm Table brings timeless farmhouse style to outdoor living, with a versatile design that adapts beautifully to any occasion.

The wood-slat top and substantial square legs create a clean, classic canvas that's ready to host everything from casual, fresh-air brunches to elegant starlit dinners.

Built with our signature sturdy construction and reinforced base, this table can be customized in height, size and color to perfectly suit your space.

A center hole accommodates our umbrella base, making sun-drenched afternoons just as inviting as evening gatherings.

 **MADE IN USA**  
Lancaster County, Pa



*Pictured: Bright White & Driftwood Gray*

## Paradise Pub Set

Our inviting Pub Set creates an intimate getaway for two. Step up and unwind, enjoying elevated views while sharing small bites and a favorite beverage with a special someone. The shared table is round, welcoming, and super-sturdy while the hightop chairs have ample arm and footrests for comfort and stability.

Personalize it! Select your chair back from 4 of our most popular designs—the Fenwick, Lancaster, Paradise, or Surf. Mix and match colors to find the ideal combination for your environment.



Our chairs are available  
in 4 back styles



Surf



Fenwick



Lancaster



Paradise

*Like the Balcony chair, our Pub chair guarantees great views from decks and balconies.*



**448A** Paradise Pub Armchair



**506** 38" Round Pub Table



# 44x72 Lancaster Dining Set



*Pictured: Seashell & Coastal Grey with Lancaster-style back*

Comfort is key when it comes to transforming an outdoor space into one where friends and family love to gather year round. Here, we've combined an oversized table with Adirondack-style chairs edited for ease and long-term sitting sessions. Chairs are generously sized, with ample armrests and broad backs. Horizontal-plank seats have been carefully designed to mold to your body, and provide an ergonomic cradle that's also easy to sit down and rise from. Set includes two swivel Captain chairs.



**465** 44 x 72 Dining Table



**542A-S** Lancaster Swivel Dining Armchair



**542A** Lancaster Dining Armchair

This set is **low-maintenance**: Keep clean with soap and water.

**Built-in UV** protection keeps colors crisp for years.

**Get creative** with color! Our two-tone design means you can choose contrasting colors for the border. Select from our extensive palette of wood grains and UV colors.

# Paradise



**448A** Paradise Pub Armchair  
30 x 35 x 50



**447A** Paradise Balcony Armchair  
30 x 35 x 44



**446A** Paradise Dining Armchair  
30 x 30 x 38



**404** Paradise Folding Adirondack  
30 x 37 x 40

Closed

Open



**448A-S** Paradise Swivel Pub Armchair  
30 x 34 x 50



**447A-S** Paradise Swivel Balcony Armchair  
30 x 34 x 43



**446A-S** Paradise Swivel Dining Armchair  
30 x 32 x 39



**419-S** Paradise Swivel Glider  
30 x 32 x 40



**419** Paradise Single Glider  
30 x 32 x 40



**420** Paradise 4' Glider  
54 x 32 x 40



**421** Paradise 5' Glider w/cup holder  
66 x 32 x 40



**562** Paradise 4' Bench  
54 x 31 x 42

**563** Paradise 5' Bench w/ cup holder  
66 x 31 x 42 (not pictured)



**TANGENT**  
SUSTAINABLE LUMBER

Exclusive lumber supplier for Paradise Outdoor Designs.

# Lancaster



**544A** Lancaster Pub Armchair  
30 x 35 x 50



**543A** Lancaster Balcony Armchair  
30 x 35 x 44



**542A** Lancaster Dining Armchair  
30 x 30 x 38



Open



Closed

**540** Lancaster Folding Adirondack  
30 x 37 x 40 (open)  
30 x 12 x 49 (closed)



**544A-S** Lancaster Swivel Pub Armchair  
30 x 35 x 50



**543A-S** Lancaster Swivel Balcony Armchair  
30 x 35 x 44



**542A-S** Lancaster Swivel Dining Armchair  
30 x 32 x 38



**547-S** Lancaster Swivel Glider  
30 x 32 x 40



Fold-down cup holder

**545** Lancaster 4' Bench 54 x 32 x 42 (not pictured)  
**546** Lancaster 5' Bench w/ cup holder 66 x 32 x 42



**547** Lancaster Single Glider  
30 x 32 x 40



**548** Lancaster 4' Glider  
54 x 32 x 40



**549** Lancaster 5' Glider  
66 x 32 x 40 (w/console)

# Fenwick



**534A** Fenwick Pub Armchair  
30 x 35 x 52



**533A** Fenwick Balcony Armchair  
30 x 35 x 46



**532A** Fenwick Dining Armchair  
30 x 30 x 40



**530** Fenwick Folding Adirondack  
30 x 37 x 41 (open)  
30 x 12 x 49 (closed)



**534A-S** Fenwick Swivel Pub Armchair  
30 x 34 x 52



**533A-S** Fenwick Swivel Balcony Armchair  
30 x 34 x 46



**532A-S** Fenwick Swivel Dining Armchair  
30 x 31 x 41



**537-S** Fenwick Swivel Glider  
30 x 32 x 42



**537** Fenwick Single Glider  
30 x 32 x 42



**538** Fenwick 4' Glider  
54 x 32 x 42



**539** Fenwick 5' Glider w/ cup holder  
66 x 32 x 42



Fold-down cup holder



**408** Ottoman  
22 x 19 x 16



**401** Cup Holder  
6 x 7 x 2



**413** Fenwick Garden Bench  
57 x 24 x 35

# Bethany



**630** Bethany Dining Side Chair  
18 x 24 x 40



**631** Bethany Balcony Side Chair  
18 x 24 x 46



**632** Bethany Pub Side Chair  
18 x 24 x 52



**633** Bethany Dining Arm Chair  
25 x 24 x 40



**634** Bethany Balcony Arm Chair  
25 x 24 x 46



**635** Bethany Pub Arm Chair  
25 x 24 x 52



**636** Bethany Swivel Dining Arm Chair  
25 x 24 x 40



**637** Bethany Swivel Balcony Chair  
25 x 24 x 46



**638** Bethany Swivel Pub Chair  
25 x 24 x 52



**658-S** Jayden Dining Swivel Arm Chair  
25 x 24 x 34



Photo coming soon!



Photo coming soon!

**659-S** Jayden Balcony Swivel Chair  
25 x 24 x 40

**660-S** Jayden Pub Swivel Chair  
25 x 24 x 46

# Jayden



**655** Jayden Dining Side Chair  
22.5 x 24 x 34



**656** Jayden Balcony Side Chair  
22.5 x 24 x 40



**657** Jayden Pub Side Chair  
22.5 x 24 x 46



**658** Jayden Dining Arm Chair  
25 x 24 x 34



**659** Jayden Balcony Arm Chair  
25 x 24 x 40



**660** Jayden Pub Arm Chair  
25 x 24 x 46



**652** Jayden Sofa  
73 x 29 x 31



**651** Jayden Loveseat  
51 x 29 x 31



**650** Jayden Chair  
28 x 29 x 31



**653** Jayden Chat Swivel Chair  
28 x 29 x 31

# Kelsy



**620** Kelsy Dining Side Chair  
18 x 25 x 40



**621** Kelsy Balcony Side Chair  
18 x 25 x 36



**622** Kelsy Pub Side Chair  
18 x 25 x 52



**623** Kelsy Dining Arm Chair  
25 x 25 x 40



**624** Kelsy Balcony Arm Chair  
25 x 25 x 46



**625** Kelsy Pub Arm Chair  
25 x 25 x 52



**626** Kelsy Dining Swivel Arm Chair  
25 x 25 x 40



**627** Kelsy Balcony Swivel Arm Chair  
25 x 25 x 46



**628** Kelsy Pub Swivel Arm Chair  
25 x 25 x 57

# Wave



**690** Wave Dining Side Chair  
25 x 25 x 40



**691** Wave Balcony Side Chair  
25 x 25 x 46



**692** Wave Pub Side Chair  
25 x 25 x 57



**693** Wave Dining Arm Chair  
25 x 25 x 40



**694** Wave Balcony Arm Chair  
25 x 25 x 46



**695** Wave Pub Arm Chair  
25 x 25 x 57



**696** Wave Dining Swivel Arm Chair  
25 x 25 x 40



**697** Wave Balcony Swivel Arm Chair  
25 x 25 x 46



**698** Wave Pub Swivel Arm Chair  
25 x 25 x 57

# Surf



**523** Surf Folding Adirondack Chair  
30 x 36 x 43  
30 x 12 x 49 (closed)



**525A-S** Surf Dining Swivel Arm Chair  
29 x 31 x 47



**526A-S** Surf Balcony Swivel Arm Chair  
29 x 36 x 53



**527A-S** Surf Pub Swivel Arm Chair  
29 x 36 x 59



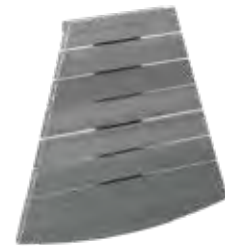
**525A** Surf Dining Arm Chair  
29 x 33 x 47



**526A** Surf Balcony Arm Chair  
29 x 37 x 53



**527A** Surf Pub Arm Chair  
29 x 37 x 59



**406** Settee Table  
28 x 22 x 2



6' Surf Board Table

- 340** Dining 72 x 22 x 30
- 341** Balcony 72 x 22 x 36
- 440** Standard 72 x 22 x 39
- 342** Pub 72 x 22 x 42



**520** Surf End Table  
26 x 15 x 23



**521** Surf Coffee Table  
48 x 19 x 19



**439** 4' Surf Board Table  
48 x 19 x 39



- 741** 8' Surf Board Table - Balcony Height  
96 x 33 x 36
- 742** 8' Surf Board Table - Pub Height  
96 x 33 x 42



**416** Round Barstool  
16 x 16 x 30



**415** Round Barstool  
16 x 16 x 24



**414** Round Barstool  
16 x 16 x 18



**416-S** Round Swivel Barstool  
16 x 16 x 30



**415-S** Round Swivel Barstool  
16 x 16 x 24



**414-S** Round Swivel Barstool  
16 x 16 x 18



**385-B** 30" Saddle Seat  
Bar Stool w/back  
22 x 19 x 30



**442-B** 29" Saddle Seat  
Bar Stool w/back  
22 x 19 x 29



**441-B** 24" Saddle Seat  
Bar Stool  
22 x 19 x 24



**494-B** 18" Saddle Seat  
Bar Stool  
22 x 19 x 18



**385** 30" Saddle Seat  
Bar Stool  
22 x 19 x 30



**442** 29" Saddle Seat  
Bar Stool  
22 x 19 x 29



**441** 24" Saddle Seat  
Bar Stool  
22 x 19 x 24



**494** 18" Saddle Seat  
Bar Stool  
22 x 19 x 18



**380** 29" Nesting  
Saddle Seat Stool  
19 x 13 x 29



# Fireside Cushions sold separately.

We use a premier slat system which provides comfort and longevity.



**430** Fireside Chair  
30 x 32 x 34

**431** Fireside Loveseat  
54 x 32 x 34

**432** Fireside Sofa  
79 x 32 x 34



**430-S** Fireside Swivel Chair  
30 x 32 x 34

**454** Fireside Ottoman  
25 x 25 x 14

**430-SR** Fireside Swivel  
Rocker Chair  
30 x 32 x 34



**434** Fireside Coffee Table  
42 x 22 x 18

**433** Fireside End Table  
26 x 22 x 22

## Fireside Sectional



**750** Fireside  
Sectional  
corner  
32 x 32 x 34

**752** Fireside  
Sectional  
armless  
25 x 32 x 34



**751-L** Fireside Sectional  
with left arm  
27 x 32 x 34

**751-R** Fireside Sectional  
with right arm  
27 x 32 x 34

# Josey *Cushions sold separately.*



**730** Josey Chair  
without cushion  
30 x 32 x 31



**731** Josey Loveseat  
without cushion  
30 x 32 x 31



**732** Josey Sofa  
without cushion  
30 x 32 x 31



**417** 20" End Table  
20 x 17 x 23



**564** Lounge w/ Arms  
28 x 78 x 21



**565** Lounge (no arms)  
28 x 78 x 14



**510** 4' Bench 48 x 14 x 18  
**511** 54" Bench 54 x 14 x 18  
**512** 5' Bench 60 x 14 x 18



**513** 6' Bench 72 x 14 x 18  
**514** 7' Bench 84 x 14 x 18  
**614** 8' Bench 96 x 14 x 18



**Canvas Navy**



**Bliss Breeze**



**Spectrum Eggshell**



**Spectrum Sand**



**Spectrum Graphite**



**Gateway Coast**



**Bliss Dew**



**Bliss Linen**



**Marvel Sage**



**Milano Charcoal**

**LOUNGE CUSHION**

- 1301** Canvas Navy
- 1302** Spectrum Eggshell
- 1303** Spectrum Sand
- 1304** Bliss Breeze
- 1305** Spectrum Graphite
- 1306** Milano Charcoal
- 1307** Gateway Coast
- 1308** Bliss Dew
- 1109** Bliss Linen
- 1310** Marvel Sage

**6" PREMIUM CUSHION SET**

- 1101** Canvas Navy
- 1102** Spectrum Eggshell
- 1103** Spectrum Sand
- 1104** Bliss Breeze
- 1105** Spectrum Graphite
- 1106** Milano Charcoal
- 1107** Gateway Coast
- 1108** Bliss Dew
- 1109** Bliss Linen
- 1110** Marvel Sage



**422** Rocker  
25 x 33 x 48



**423** Modern Rocker  
25 x 33 x 48



**402** Planter  
18 x 18 x 13



**403** Planter  
18 x 18 x 19



**409** Gliding Ottoman  
22 x 20 x 13



**529** Turtle End Table  
24 x 16 x 22



**528** Turtle Coffee Table  
45 x 25 x 19



**411** Fenwick Coffee Table  
36 x 15 x 19



**410** Fenwick End Table  
18 x 15 x 19



**412** Fenwick Console Table  
36 x 15 x 36



**44" Round Table**  
**507** Dining 44 x 44 x 30  
**508** Balcony 44 x 44 x 36  
**509** Pub 44 x 44 x 42



**38" Round Table**  
**504** Dining 38 x 38 x 30  
**505** Balcony 38 x 38 x 36  
**506** Pub 38 x 38 x 42



**22" Round Table**  
**498** Dining 22 x 22 x 30  
**499** Balcony 22 x 22 x 36  
**500** Pub 22 x 22 x 42



**418** 38" Round  
Conversation Table  
38 x 38 x 20

All tables are available in Dining, Balcony & Pub heights.



*Dining height pictured*

- 72 x 44 Table  
**465** Dining 72 x 44 x 30  
**466** Balcony 72 x 44 x 36  
**467** Pub 72 x 44 x 42



*Balcony height pictured*

- 60 x 44 Table  
**460** Dining 60 x 44 x 30  
**461** Balcony 60 x 44 x 36  
**462** Pub 60 x 44 x 42



*Pub height pictured*

- 38 x 38 Square Table  
**450** Dining 38 x 38 x 30  
**451** Balcony 38 x 38 x 36  
**452** Pub 38 x 38 x 42



- 96 x 44 Table  
**475** Dining 96 x 44 x 30  
**476** Balcony 96 x 44 x 36  
**477** Pub 96 x 44 x 42



- 72 x 38 Boat Table  
**600** Dining 72 x 38 x 30  
**601** Balcony 72 x 38 x 36  
**602** Pub 72 x 38 x 42



**850** Wave Dining Table  
72 x 46 x 30



**822** Dining farm Table  
72 x 46 x 30



- 22" Square Fenwick Table  
**570** Dining 22 x 22 x 30  
**571** Balcony 22 x 22 x 36  
**572** Pub 22 x 22 x 42



- 22 x 60 Fenwick Table  
**576** Dining 60 x 22 x 30  
**577** Balcony 60 x 22 x 36  
**578** Pub 60 x 22 x 42

*Not pictured*

- 22 x 48 Fenwick Table  
**573** Dining 48 x 22 x 30  
**574** Balcony 48 x 22 x 36  
**575** Pub 48 x 22 x 42

Fits all our tables.  
 Not to be used as a  
 stand-alone umbrella  
 base. Requires table  
 support.



**407** Umbrella Base

# Table Sizes

SQUARE TABLES			
	Dining	Balcony	Pub
32" Sq	<b>495</b> 32 x 32 x 30	<b>496</b> 32 x 32 x 36	<b>497</b> 32 x 32 x 42
38" Sq	<b>450</b> 38 x 38 x 30	<b>451</b> 38 x 38 x 36	<b>452</b> 38 x 38 x 42
44" Sq	<b>455</b> 44 x 44 x 30	<b>456</b> 44 x 44 x 36	<b>457</b> 44 x 44 x 42
48" Sq	<b>715</b> 48 x 48 x 30	<b>716</b> 48 x 48 x 36	<b>717</b> 48 x 48 x 42
60" Sq	<b>640</b> 60 x 60 x 30	<b>641</b> 60 x 60 x 36	<b>642</b> 60 x 60 x 42
72" Sq	<b>646</b> 72 x 72 x 30	<b>647</b> 72 x 72 x 36	<b>648</b> 72 x 72 x 42

ROUND TABLES			
	Dining	Balcony	Pub
22"	<b>498</b> 22 x 22 x 30	<b>499</b> 22 x 22 x 36	<b>500</b> 22 x 22 x 42
32"	<b>501</b> 32 x 32 x 30	<b>502</b> 32 x 32 x 36	<b>503</b> 32 x 32 x 42
38"	<b>504</b> 38 x 38 x 30	<b>505</b> 38 x 38 x 36	<b>506</b> 38 x 38 x 42
44"	<b>507</b> 44 x 44 x 30	<b>508</b> 44 x 44 x 36	<b>509</b> 44 x 44 x 42
48"	<b>515</b> 48 x 48 x 30	<b>516</b> 48 x 48 x 36	<b>517</b> 48 x 48 x 42
60"	<b>643</b> 60 x 60 x 30	<b>644</b> 60 x 60 x 36	<b>645</b> 60 x 60 x 42

RECTANGULAR TABLES			
	Dining	Balcony	Pub
32 x 60	<b>591</b> 60 x 32 x 30	<b>592</b> 60 x 32 x 36	<b>593</b> 60 x 32 x 42
32 x 72	<b>594</b> 72 x 32 x 30	<b>595</b> 72 x 32 x 36	<b>596</b> 72 x 32 x 42
32 x 84	<b>597</b> 84 x 32 x 30	<b>598</b> 84 x 32 x 36	<b>599</b> 84 x 32 x 42
38 x 60	<b>550</b> 60 x 38 x 30	<b>551</b> 60 x 38 x 36	<b>552</b> 60 x 38 x 42
38 x 72	<b>553</b> 72 x 38 x 30	<b>554</b> 72 x 38 x 36	<b>555</b> 72 x 38 x 42
38 x 84	<b>556</b> 84 x 38 x 30	<b>557</b> 84 x 38 x 36	<b>558</b> 84 x 38 x 42
38 x 96	<b>559</b> 96 x 38 x 30	<b>560</b> 96 x 38 x 36	<b>561</b> 96 x 38 x 42
38 x 120	<b>867</b> 120 x 38 x 30	<b>868</b> 120 x 38 x 36	<b>869</b> 120 x 38 x 42
44 x 60	<b>460</b> 60 x 44 x 30	<b>461</b> 60 x 44 x 36	<b>462</b> 60 x 44 x 42
44 x 72	<b>465</b> 72 x 44 x 30	<b>466</b> 72 x 44 x 36	<b>467</b> 72 x 44 x 42
44 x 84	<b>470</b> 84 x 44 x 30	<b>471</b> 84 x 44 x 36	<b>472</b> 84 x 44 x 42
44 x 96	<b>475</b> 96 x 44 x 30	<b>476</b> 96 x 44 x 36	<b>477</b> 96 x 44 x 42
44 x 108	<b>857</b> 108 x 44 x 30	<b>858</b> 108 x 44 x 36	<b>859</b> 108 x 44 x 42
44 x 120	<b>860</b> 120 x 44 x 30	<b>861</b> 120 x 44 x 36	<b>862</b> 120 x 44 x 42
44 x 144	<b>863</b> 144 x 44 x 30	<b>864</b> 144 x 44 x 36	<b>865</b> 144 x 44 x 42

BOAT TABLES			
	Dining	Balcony	Pub
38 x 72	<b>600</b> 72 x 38 x 30	<b>601</b> 72 x 38 x 36	<b>602</b> 72 x 38 x 42
38 x 84	<b>603</b> 84 x 38 x 30	<b>604</b> 84 x 38 x 36	<b>605</b> 84 x 38 x 42
38 x 96	<b>606</b> 96 x 38 x 30	<b>607</b> 96 x 38 x 36	<b>608</b> 96 x 38 x 42
38 x 108	<b>615</b> 120 x 38 x 30	<b>616</b> 120 x 38 x 36	<b>617</b> 120 x 38 x 42
44 x 72	<b>700</b> 72 x 44 x 30	<b>701</b> 72 x 44 x 36	<b>702</b> 72 x 44 x 42
44 x 84	<b>703</b> 84 x 44 x 30	<b>704</b> 84 x 44 x 36	<b>705</b> 84 x 44 x 42
44 x 96	<b>706</b> 96 x 44 x 30	<b>707</b> 96 x 44 x 36	<b>708</b> 96 x 44 x 42

DINING FARM TABLE		
40 x 40	<b>830</b>	40 x 40 x 30
40 x 60	<b>831</b>	40 x 60 x 30
40 x 72	<b>832</b>	40 x 72 x 30
40 x 84	<b>833</b>	40 x 84 x 30
40 x 96	<b>834</b>	40 x 96 x 30
46 x 46	<b>820</b>	46 x 46 x 30
46 x 60	<b>821</b>	46 x 60 x 30
46 x 72	<b>822</b>	46 x 72 x 30

DINING WAVE TABLE		
	<b>850</b>	46 x 72 x 30
	<b>851</b>	40 x 72 x 30



72 x 44 Fire Table

- 804** Chat 72 x 44 x 25
- 805** Dining 72 x 44 x 30
- 806** Balcony 72 x 44 x 36
- 807** Pub 72 x 44 x 42

72 x 44 Fire Table Cover

- 804-C** Chat Cover
- 805-C** Dining Cover
- 806-C** Balcony Cover
- 807-C** Pub Cover



44" Round Fire Table

- 812** Chat 44 x 44 x 25
- 813** Dining 44 x 44 x 30
- 814** Balcony 44 x 44 x 36
- 815** Pub 44 x 44 x 42

44" Fire Table Cover

- 812-C** Chat 44 x 44 x 25
- 813-C** Dining 44 x 44 x 30
- 814-C** Balcony 44 x 44 x 36
- 815-C** Pub 44 x 44 x 42



**804-L** Poly Fire Table Lid  
12 x 42



**800-L** 20" Round Poly Fire Table Lid  
25 x 22

*Fits both the 44" Round Fire Table and the 43 x 43 Fire Table*



43 x 43 Fire Table

- 800** Chat 43 x 43 x 25
- 801** Dining 43 x 43 x 30
- 802** Balcony 43 x 43 x 36
- 803** Pub 43 x 43 x 42



43 x 43 Fire Table Cover

- 800-C** Chat Cover
- 801-C** Dining Cover
- 802-C** Balcony Cover
- 803-C** Pub Cover



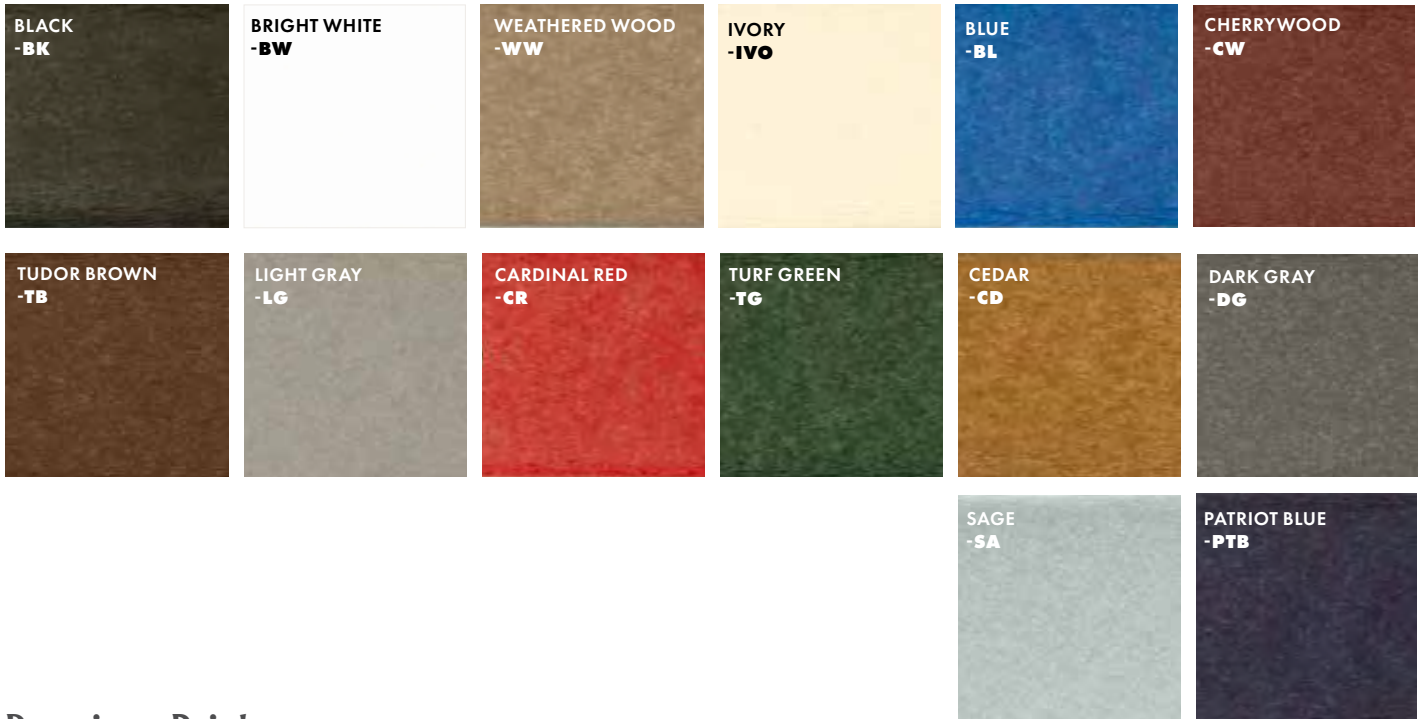
- 720** 5' Bar 60 x 33 x 42
- 721** 6' Bar 72 x 33 x 42
- 722** 7' Bar 84 x 33 x 42



**405** Open Front Island  
61 x 34 x 36

# Color Swatches

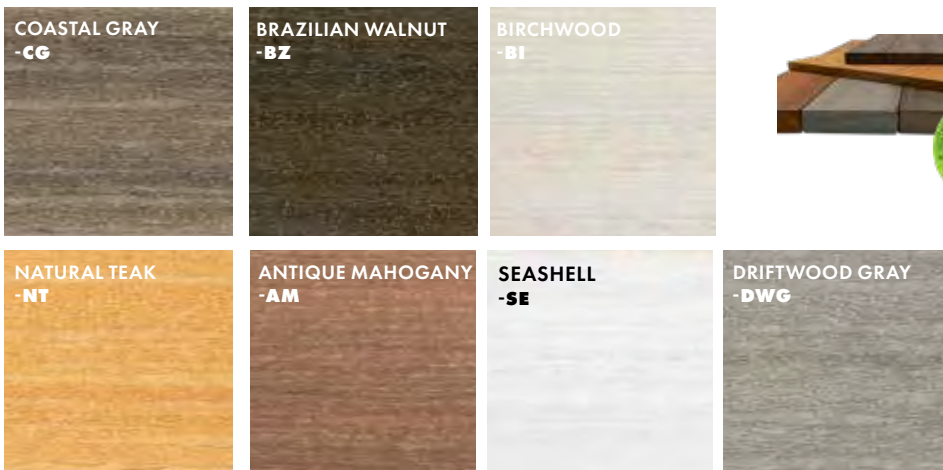
## Standard



## Premium Brights



## Premium Wood Grain



**TANGENT**  
SUSTAINABLE LUMBER

Exclusive lumber supplier for  
Paradise Outdoor Designs.



From our shop to your home, our goal is simple: elevate everyday living by spending more time outdoors.

Our family has been crafting quality furniture for over 29 years in the farmlands of Amish Country. Today, our second-generation makers use the skills that their father, a distinguished woodworking craftsman, passed down. This dedication to quality, and sensibility for producing beautiful furniture inspires us to create outdoor furniture that is both lounge-worthy and highly durable.

Our all-weather poly lumber designs are crafted from the highest quality, high-density polyethylene plastic (Tangent). The result is highly durable furniture that is UV-, moisture-, and pest-resistant, so it can be enjoyed in all seasons and climates.

Our collections of colors and wood-grains won't fade or transfer on cushions or clothing – even when wet. And, you'll find that our furniture can withstand hot sun, snow, rain, salt spray, and even rambunctious kids and dogs.

We've designed our furniture to be low-maintenance – just how outdoor living was meant to be. Simply wipe clean with soap and water as needed. No additional staining, treatment, or upkeep is needed.

From porch-sitting to pool parties, cozy bonfires, and everything in between, we hope our outdoor furniture will become a well-used backdrop for family gatherings, fond memories, and cherished traditions.

